

'Trembletone' tremelo pedal parts list:


Resistors:

Value – all ¼ watt 1% tolerance

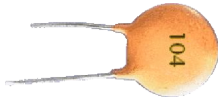

Value	Color Code	Quantity
3K3	orange/orange/black/brown	1
4.7KΩ	yellow/violet/black/brown	8
5K6Ω	green/blue/black/brown	1
6K8	blue/grey/black/brown	1
10KΩ	brown/black/black/red	3
18KΩ	brown/gray/black/red	1
27KΩ	red/violet/black/red	1
47KΩ	yellow /violet/black/red	2
100KΩ	brown/black/black/orange	3
1MΩ	brown/black/black/yellow	5
4M7	orange/violet/green	1



POTs: (potentiometers)

Value	Image	Quantity
100KΩ linear dual gang 'B' type		1
100KΩ linear 'B' type		1

Capacitors:

Value	Image	Quantity
0.1 uF ceramic disc ('104')		2
0.47uF 63V MKT (grey plastic type)		1

1uF/63V MKT (grey plastic type)



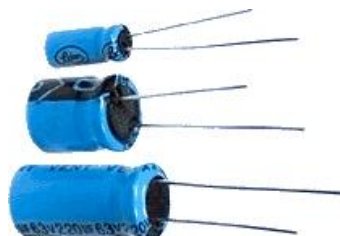
4

100nF MKT polyester



2

10uF/10V - 35V electrolytic



2

47uF/6.3V - 16V electrolytic

5

Semiconductor devices:

1N4148 diode



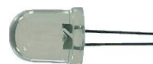
2

4558 or similar dual op-amp 8 pin



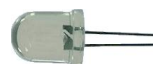
1

Blue LED for the active tremelo circuit



1

Other colour LED may be used for the indicator



1

LDR (light dependent resistor)
Altronics P/N Z1619



1

BC547 transistors



6

2N5485 FET transistor



1

Hardware:

Phono jack sockets with DC switching



2



Alloy case type Diecast Aluminium Box w/
flanges 114 x 90 x 55 type IP66.

Altronics part number H0423.



1

9 pole DTDP stomp switch



Battery snap

1

1

DC power socket with battery switch



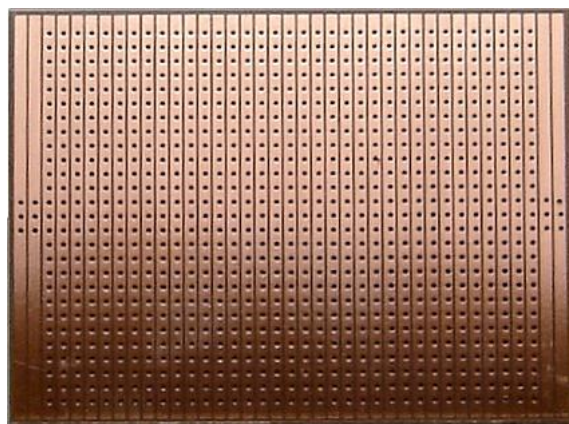
1

Retro knobs



2

Vero Board 75x100mm 1" Pitch



1

Various M3 nuts, bolts & washers as required



Hook-up wire & solder etc.