

GuitFET guitar / bass preamp:

Resistors:

Value - all ¼ watt 1% tolerance

Value	Color Code	Quantity
390R Ω	orange/white/black/black	1
470R	yellow/violet/black/black	3
1K Ω	brown/black/black/brown	2
1K8 Ω	brown/grey/black/brown	2
3K3 Ω (pwr LED & function LEDs) ***	orange/orange/black/brown	1 - 4
4K7	yellow/violet/black/brown	2
5K6 Ω	green/blue/black/brown	1
10K	brown/black/black/brown	1
15K Ω	brown/green/black/red	3
47K Ω	yellow/violet/black/red	3
100K	brown/black/black/red	2
220K	red/red/black/orange	1
180K Ω	brown/grey/black/orange	1
470K Ω	yellow/violet/black/orange	4
1M Ω	brown/black/black/yellow	1



Capacitors:

Value & type	Image	Quantity
27pF ceramic disc		1
47pF ceramic disc		1
100pF ceramic disc		1
1000uF/16V electrolytic		1
47uF/10V electrolytic		1

120uF/6.3V electrolytic

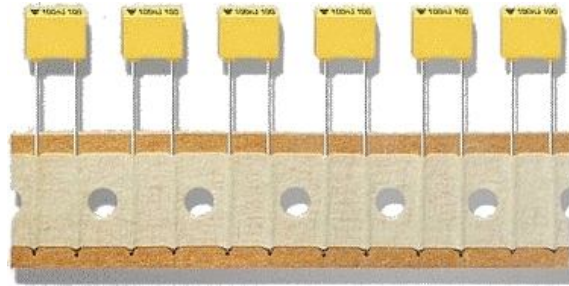
2

47uF/6.3V electrolytic

4

2.2nF MKT

2



47nF MKT

1

10nF MKT

2

100nF MKT

4

0.47uF MKT

1



1uF MKT

1

Semiconductor devices:

1N4004 diodes



4

Power indicator: LED and function indicators from toggle switches (optional). various colours to choose from ***



4

BC547 NPN TO-92 general purpose signal transistor



3

2N5485 depletion FET TO-92



2

LM7809 +9V 3pin regulator



1

Hardware:

POT dual gang 100K log 23mm



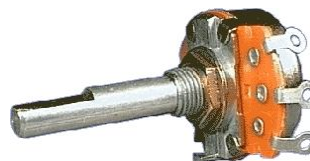
1

POT 500K linear 23mm (100KB)



2

POT 100K log 23mm (100KA)



1

Phono jack socket with locking feature (for fancy pants!) Altronics P/N P0064



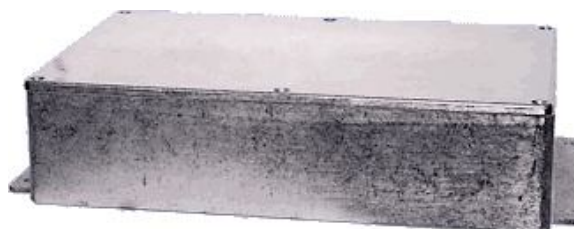
1

3 terminal PCB mount socket Altronics P/N P2029



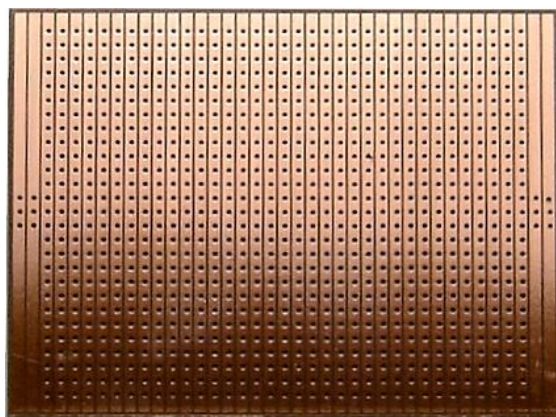
1

Diecast Aluminium Box With Flanges
222x146x55 IP66
Altronics P/N H0429



1

Vero Board 150x100mm 1" Pitch



1

IEC mains socket



1

6.3V - 0 - 6.3V / 240V 150mA Centre Tapped Transformer (EI Core) Altronics P/N M2851L

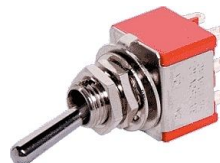


1

Various M3 nuts, bolts & washers as required



Toggle sSwitch Mini Toggle DPDT Solder Tail Altronics P/N S1345



3

Hook-up wire & solder etc.

Design Copyright © Kelvin Fleming 2013

This document is the intellectual property of Kelvin W. Fleming and is available to private users for their own use in the course of construction or repairs. It may not be reproduced for the purposes of education, public displays or the generation of profit without the expressed permission of the owner.

